

# DIAMONDS

OFFICIAL PUBLICATION FOR THE CONCRETE SAWING AND DRILLING ASSOCIATION OF AUSTRALIA

ISSUE 13 MARCH 2017



**CUT AND CLEAN  
CONCRETE CUTTING  
– 10 YEARS IN THE MAKING**

**CERTIFICATE IV TRAINING**



# After 40 years of innovation:

# Meet a new generation in demolition power.



INTRODUCING:  
**120D + 280**

## Relentless Innovation Since 1976.

Back in 1976 we made a promise to provide ultimate demolition power for the toughest jobs on planet earth. We have kept that promise. By continuously listening to our customers we have managed to provide new and improved solutions, year after year. And this time, we give you two more: The Brokk 120D, the world's smallest diesel-driven demolition machine, and the Brokk 280 – the perfect all-round machine with an increased performance and more robust and modern design.

Welcome to discover a more powerful future at [www.brokk.com](http://www.brokk.com).



# BROKK®

Brokk Australia Pty Ltd | [www.brokkaustralia.com.au](http://www.brokkaustralia.com.au) | +61 (0)8 8387-7742



## CONCRETE SAWING & DRILLING ASSOCIATION OF AUSTRALIA (CSDAA)

C/- Australian Industry Group  
20 Queens Rd, Melbourne  
VICTORIA 3004  
AUSTRALIA

E: [associations@aigroup.com.au](mailto:associations@aigroup.com.au)  
W: [www.csdaa.com.au](http://www.csdaa.com.au)

## CSDAA BOARD

**PRESIDENT: JASON FRANKEN**  
SUPERCITY CONCRETE CUTTING  
E: [supercity@bigpond.com](mailto:supercity@bigpond.com)

**VICE PRESIDENT: EBONY KNIGHT**  
CUT & CLEAN  
E: [ebony@cutandclean.com.au](mailto:ebony@cutandclean.com.au)

**CSDAA SECRETARIAT: CAROLYN MACGILL**  
AUSTRALIAN INDUSTRY GROUP  
E: [carolyn.macgill@aigroup.com.au](mailto:carolyn.macgill@aigroup.com.au)

**TREASURER: MARIO GOMIZELJ**  
ADVANCED SAWING & DRILLING  
E: [info@advancedsawing.com.au](mailto:info@advancedsawing.com.au)

**PUBLIC OFFICER/SECRETARY: WILL VISSER**  
BROKK AUSTRALIA  
E: [will@brokkaustralia.com.au](mailto:will@brokkaustralia.com.au)

## TCSDDA EXECUTIVE

**CATHERINE THOMSON**  
QCDS  
E: [catherine@qcds.com.au](mailto:catherine@qcds.com.au)

**PHIL ROWDEN**  
TYROLIT  
E: [phil.rowden@tyrolit.com](mailto:phil.rowden@tyrolit.com)

**KEVIN SMITH**  
RIPA CONCRETE CUTTING  
E: [kevin@ripagroup.com.au](mailto:kevin@ripagroup.com.au)

**SCOTT HANLEY**  
DIACORE  
E: [scott@diacore.com.au](mailto:scott@diacore.com.au)

**BEN SHIELD**  
HILTI AUSTRALIA  
E: [benjamin.shield@hilti.com](mailto:benjamin.shield@hilti.com)

**STEVE WYLDE**  
ONLINE CONCRETE CUTTING SERVICES  
E: [swylde@onlineconcrete.com.au](mailto:swylde@onlineconcrete.com.au)

**KERRIE AUER**  
POWER CONCRETE CUTTING  
E: [kerrieauer@powerconcretecutting.com.au](mailto:kerrieauer@powerconcretecutting.com.au)

# ISSUE 13

## FEATURES

### 06

CONVENTION CENTRE  
DEMOLITION



### 11

BROKK DEMOLITION ROBOT  
STORY



### 16

CASE STUDY ONLINE CONCRETE  
CUTTING



### 20

SAY NAMMOUR: TAKING  
FLOORING TO THE NEXT LEVEL



### 26

EPA CLASSIFICATION - 10 YEARS  
IN THE MAKING



## REGULARS

04 PRESIDENT'S REPORT

43 INDUSTRY CALENDAR

43 ADVERTISERS LISTING

46 MEMBERSHIP FORM

47 MEMBERS LISTING



COVER IMAGE  
Stock image of hand sawing

# DIAMONDS

OFFICIAL PUBLICATION FOR THE CONCRETE SAWING AND DRILLING ASSOCIATION OF AUSTRALIA





## PRESIDENT'S REPORT 10/2/2017

It would appear that the start of 2017 in many States and Territory's is a sign of things to come this year. Major infrastructure projects and commercial developments are keeping many companies busy; which is always good news.

Suppliers and manufacturers also have a smile because of the flow on effect for supply and demand in consumables and equipment. It's good to be busy; however we all know the knock on effect that comes with this.

Maintenance and the servicing of equipment is usually the first casualty. With the ongoing delivery of services, equipment is rarely in the workshop. You will find as equipment & vehicles get older; the time line and interval between services gets shorter due to fair wear and tear.

Basic pre start checks by operators on all equipment they are in charge of can save you time and money in the long run. Reliability and punctuality are two important attributes in running a successful business. Clients have low tolerance for repeat incidences where equipment and vehicles break down.

Productivity is king and is becoming more important than ever before. The cost of doing business increases every year and is most prevalent in the sawing and drilling industry. Early last year Len Phillips from Ai Group gave a short presentation on the actual costs to put an employee in the field.

To summarise chargeable hours in a typical year: once we have taken out the weekends; holidays; sick days; and public holidays; we are left with 200 work days. Multiply this by an 8-hour day; we have 1600 chargeable man hours per operator each year. Now, of these 8 hours how many of those are spent actually on the tools generating revenue?

If I was to approach everyone in the association today individually and ask what it costs to put an operator in the field the variance in cost estimates would be substantial. Back in 2009 the CSDA commissioned a contractor survey asking these exact same questions. Average revenue generated by one operator in the field for the year was \$ 150,000.00 US. The average operator hourly rate paid at this time was \$ 20.29 US. So how important is productivity to you? With each passing year is your productivity increasing or decreasing? It doesn't matter if you have been in business the past 30 years or the past 3 months. The best advice I can give - stay on top and monitor your productivity and costs.

Doing business in construction is getting slower not harder. Conforming compliances to Tier 1-2-3 builders incurs costs to your business, which many of us never pass on. Site inductions are the number one cause of lost production. The sawing and drilling industry would conduct the most site inductions in the construction industry. I am all for safety but the induction process on most sites goes way beyond what the construction induction card was actually designed for. The construction induction card was implemented to streamline the induction process when going onto a new site. Again, if you add up the time spent in a year for each operator and the number of inductions completed surely we should be the safest industry sector going around.

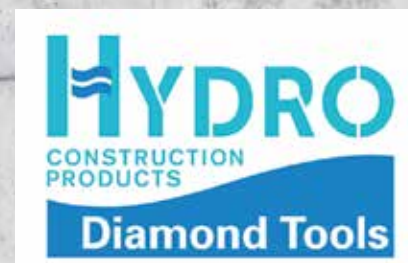
As an industry we need to assess how productivity losses can be minimised and more importantly how these costs can be passed back to the client. Working smarter not harder is a great business model. Having the correct information on hand to defend your case when charging for lost productivity is even better business.

Sincerely  
Jason Franken,  
CSDAA President



# Concrete Cutting & Drilling Range

Hydro Diamond Tools is our range of high quality concrete cutting tools sourced from leading brands such as LISSMAC, Arix, Stihl, ICS, Promac, Lavina, Kerrick and Darda.



## BLADES, CORE BITS AND MORE

Hydro Construction Products are one of the leading suppliers of diamond blades and core bits in the industry! Our huge range includes a variety of Arix blades to assist with all types of concrete cutting such as laser trade blades, stone products, premium blades and conventional and professional blades.



## LISSMAC DRILLING EQUIPMENT

Diamond core drilling machines and drilling stands. High performance powerhouse for professional use on construction sites. They are thoroughly economical and flexible to use, thanks to their modular design. In all, powerful and robust



HIGH  
PERFORMANCE  
TOOLS



Call 1300 GO HYDRO to find the right product for your next job

AUSTRALIA WIDE | [hydrocp.com.au](http://hydrocp.com.au) | email: [sales@hydrocp.com.au](mailto:sales@hydrocp.com.au)



## CONVENTION CENTRE DEMOLITION

After 18 months of failed attempts, and with two demolition companies going into liquidation leaving un-paid costs to other concrete cutting companies and contractors, the largest Demolition Company in Australia was finally called upon to complete the project. With a 25 year history of successfully working together, Advanced Sawing and Drilling Pty Ltd



and Delta Demolitions Pty Ltd commenced the cutting and demolition of the remaining structure. The old World Trade Centre / Convention Centre was built and intended for the use of the Melbourne Museum in 1990. The Premier at the time, Jeff Kennett, intervened during its construction and decided it would be better utilised as a Convention Centre. Over the years, the building has held many international conventions until the new convention centre, colloquially known as "Jeff's Shed", was constructed and opened in 1996. Built by Grollo Constructions, the World Trade Centre hosted Melbourne's first casino for a short period of time whilst the permanent venue was being constructed on the other side of the Yarra. Steeped in history, the demolition of the building will make way for a new \$200 million apartment and shopping precinct.

**BELOW** - Stitch drilling & wire sawing to separate head stock from structural beam.



As the initial design was intended for the Melbourne Museum, the World Trade Centre was constructed with unusually deep floor and beam thicknesses loaded with steel reinforcement and designed to carry extremely heavy loads.

The team from Advanced Sawing Pty Ltd ran two WCE14 Tyrolit 3 phase wire saws for 2 ½ months, cutting beams either side of two access ramps which needed to remain open to the public, therefore the use of slurry curtains was necessary to control over spray. Access to the works zone was via Elevated Works Platforms, with the wire saw remote control box proving very useful. Given that the weight of each structural beam section was between 35 – 45 tonne, each piece was removed by crane and lowered to the ground to enable safer and easier demolition.

A separation cut through a structural band beam measuring 650mm deep, running the length of the still operational Hilton Hotel boundary line was required to enable further demolition. Advanced used the Tyrolit FZ-4S / 3 phase wall saw to achieve the works, with noise reduction blades purchased to assist with lowering the acoustic noise levels.

A 24 hour operational loading dock for the Hilton Hotel existed under one of the many suspended slabs that needed to be removed. Works were required to be done without hindering hotel deliveries and ensuring that the dock area was kept clean and tidy of any concrete slurry. Cutting commenced on a Saturday and was completed Sunday afternoon. Special slurry catchment ducts were fitted to the underside of the concrete slab to control the slurry and holes were drilled for the crane's chains, with eight sections measuring 8m x 6m x 350mm deep being cut.

The final stages of the project have seen the cutting and removal by crane of square ducting towers. Each tower stood twenty metres high and were cut using Husqvarna hand saws and ring saws, with core holes drilled in the side walls for lifting points.

With the correct equipment, experienced operators and backed by the might of Delta Demolitions Pty Ltd, Advanced Sawing Pty Ltd has been able to achieve in a short time what others have not, leaving the construction management team running the project, extremely impressed and happy to both recommend us and utilise our services on other projects.

For more information on this project and others, free quotes or enquiries regarding our services, please contact the team at Advanced Sawing Pty Ltd on 03 9788 5000.



**ABOVE** - Winged structural beam removal.



**Advanced Sawing and Drilling Pty Ltd**

Mark Horne

Tel: 03 9788 5000

Email: [mark@advancedsawing.com.au](mailto:mark@advancedsawing.com.au)

Website: [www.advancedsawing.com.au](http://www.advancedsawing.com.au)



# SLURRY FOX

- Affordable treatment of slurry
- One person operation
- Easily separates grey water and slurry cake
- Dispose of slurry cake in construction waste after treatment



Call for a demo

**1300 TYROLIT (897 654)**

[tyrolit-construction.com.au](http://tyrolit-construction.com.au)

A Company of the SWAROVSKI Group



**1300 TYROLIT (897 654)**

[tyrolit-construction.com.au](http://tyrolit-construction.com.au)

A Company of the SWAROVSKI Group





Hilti Cut Assist

## SMART TECHNOLOGY FOR HIGHER PRODUCTIVITY.

**WALL AND WIRE SAWS  
NOW ALSO AVAILABLE**

Diamond coring and sawing just got easier with Cut Assist automated technology. Featuring intuitive operation and a fault diagnostic system, Cut Assist gives you full control of the job at hand. Simply enter a few parameters such as cutting depth or drilling diameter and press the start button. Finish other tasks at a safe distance while Cut Assist helps your tool take on a variety of demanding applications all on its own. With Cut Assist as your virtual assistant, you'll never have to work alone.

T 131 292 | [www.hilti.com.au](http://www.hilti.com.au)

**Hilti. Outperform. Outlast.**



## SUPERCITY - BROKK REMOTE CONTROL DEMOLITION ROBOT

On an active building site during a renovation, Supercity increased the lift shaft excavation to 2.2m<sup>2</sup> and 2m finished depth using their compact Brokk remote control demolition robot.

Exhaust fumes from diesel engines were a problem as works were undertaken inside the building. The Brokk 160 is a fume free solution powered by an 18.5kW electrical motor that requires only 32amp electrical supply.

The four outriggers increased stability with heavier loads and the tighter slew rotation enabled the unit to operate within its own footprint, making confined space work possible. Driving the unit into the building was easy due to the compact size of the unit.

The hydraulic system has unbeatable cooling capacity even in hot conditions and proportional controls provided accurate fast load out times for concrete and soil during the excavation process.

The powerful SB 202 hydraulic hammer delivers 406 Joule/blow with an estimated production rate of 2.9 m<sup>3</sup>/hour. The patented quick hitch enabled the operator to safely change tools such as a hydraulic hammer to bucket within 2 minutes.

The job was finished after two days due to limited access and information on drawings that were incomplete at the time of issue.



ABOVE - Supercity digs deep with robot.

Manual labour was used to transport the excavated materials from inside the building area to tip trucks with loading cranes. Skip bins were loaded with material and transported by trolley jacks to the trucks. The trucks lifted and emptied the skip bins into the rear of the tipper.



ABOVE - Supercity's robot cuts fumes.



ABOVE - Supercity use robot in super dig!



**24/7/365**  
**TRAXX**  
construction products

**DISCOVER THE DIFFERENCE**  
**ALL TRAXX EQUIPMENT IS SUPPORTED 24/7/365**

**Melbourne, Sydney, Brisbane, Perth, Adelaide, Darwin, Hobart**  
**PASSION. INNOVATION. EXCELLENCE.**



TRAXX CONSTRUCTION PRODUCTS.  
Head Office Unit 4/1 Rocklea Drive, Port Melbourne Victoria Australia, 3207  
Phone 1300 109 108 | Telephone +61 (0) 3 9646 9200 | Email [info@traxxcp.com.au](mailto:info@traxxcp.com.au)

[WWW.TRAXXCP.COM.AU](http://WWW.TRAXXCP.COM.AU)

# K50<sup>®</sup> *innovation*

**K50<sup>®</sup> amazingly simple – simply amazing  
by professionals for professionals**

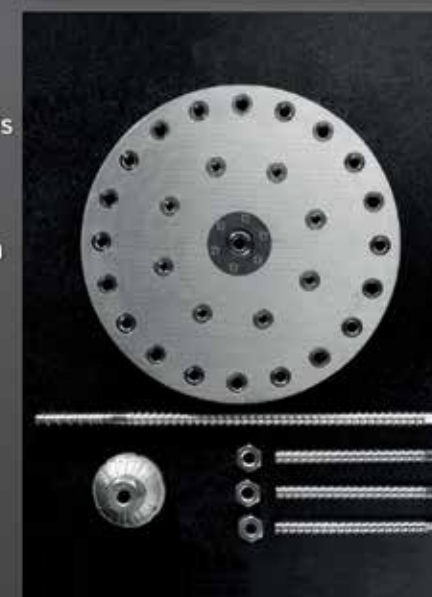
## **Water Retention Ring WSR**

- simple fixture only by negative pressure of a standard wet vacuum cleaner
- direct suction of slurry at the drill bit
- highly time saving
- simple optical control of the amount of slurry through transparent material
- protects your workers as well as your machines



## **Multi-Fixing-Plate MFP 400**

- suitable to all current drill stands and mounting brackets
- simple and safe fixture of core drilling devices and wall-saws on insulating wall panels, on lumpy surfaces, curvatures etc.



For more  
information

**Phone 1300 109 108**  
**Visit [traxxcp.com.au](http://traxxcp.com.au)**



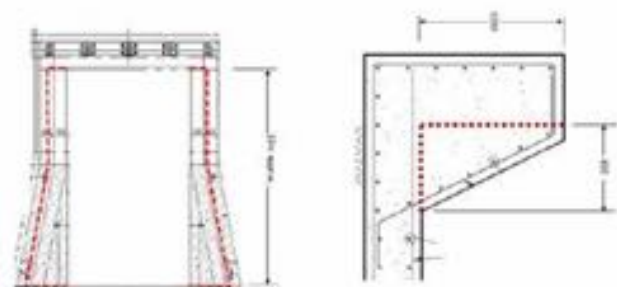


## ONLINE CONCRETE CUTTING SERVICES

### Ever had the call!

- We need some concrete cut, can you help?
- Yeah sure we can help with that, what do you need done?
- Well we have a 24 hour shutdown coming up in three weeks and were hoping you could cut two apron walls to accommodate a larger machine, we require approximately 21 metres x 1 metre deep vertically and about 21 metres x 650mm deep horizontally.
- Oh and it's a mine site about six and a half hours away.
- Struth you want all this done in one 24 hour shutdown?
- Yes mate that's right.

As you can see it wasn't straight forward cutting, as if it was going to be eh.



After a week of negotiating we were awarded the job and started planning.

As we know, administration time isn't something that's recognised as billable, with only two weeks left to organise medicals for our personnel, and get our SWMS approved to mine specifications by their EHS officer, all this took about 15 hours of concerted effort.

We had a 2 metre blade that would get to about 915mm deep but not the 1,000mm deep that was required.

This is why being a member of the CSDAA is of great benefit. After making a couple of calls we were able to obtain a 2.2 metre blade from a fellow member of the association, many thanks go to Mario from Advanced Sawing and Drilling located in Melbourne, we had the blade within two days.

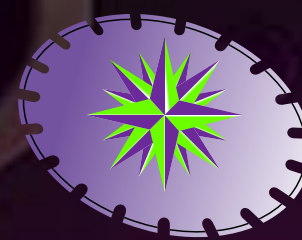
### SO WHAT TRACK SAWS ARE WE GOING TO USE?

Two of our high frequency Pentruder 8-20iQ wall saws of course. These machines are simply the best for deep cutting, having 32 amps delivering 22KW through the four speed gear box enables maximum torque whilst keeping the blade speed correct. When it comes to efficiency and power to weight nothing else on the market comes near it.

The vertical cuts whilst deep didn't really pose much of a problem, however for the horizontal cutting the feet had to be set up on adjustable mounting brackets as the walls were on a splay. We manufactured these in-house to achieve the desired result.

There was about 28 lineal metres x 115mm dia core drilling to perform, this was to enable the concrete to come free and eliminate any overcutting. Earlier in the year we had taken possession of the new Hilti DD350's equipped with the auto feeds, they are an awesome drill rig combo and ensured we were able to meet the tight time frame allocated.

Due to the efforts of our professional and dedicated 6 person onsite crew, 13 hours of travel time there and back, and 24 hours of working time later, the saw cutting and core drilling was completed to our client's satisfaction, on time and within budget.



CUTTING EDGE  
DIAMOND TOOLS



Pentruder

Cutting Edge Diamond Tools is our name and it is what we bring to the market. The brands we promote are the latest technology with the key features being Durability & Performance.

If cutting, grinding, drilling or wire sawing concrete is your job, not your hobby, then we have the equipment and consumables to do the job fast, correctly and time after time.

Call our sales teams in  
**Brisbane Sydney**  
and **Melbourne** on

**1300 87 07 53**



**RSEA**  
/// SAFETY

**20% OFF**  
**IN-STORE OR ONLINE**

Enter promo code 'CSDA' in your shopping cart before checkout.

**THE SAFETY EXPERTS!**  
Call 132 100 or shop [rsea.com.au](http://rsea.com.au)  
**30 LOCATIONS AUSTRALIA WIDE**

This voucher is valid at any RSEA Safety Store, the bearer is entitled to receive 20% OFF the value of their purchases. This voucher cannot be used for items already discounted, promotional offers or used in conjunction with any other offer. Not redeemable for cash. **VALID UNTIL 31ST MARCH 2017.**

**FLEET**  
BETTER BUSINESS SENSE **TOYOTA**

Known in the trade as a big deal

**Great deals on tool of trade vehicles**

From the hardworking HiLux SR5 and HiAce LWB, to Fortuner or Corolla Hatch, there's a vehicle to suit every need. From a great deal today to low cost, capped price servicing and lower running costs, Frankston Toyota has you and your business covered.

Please contact Joe Esmaty on 0402 393 711 or [joe@frankstontoyota.com.au](mailto:joe@frankstontoyota.com.au) to find out more.

[toyota.com.au/fleet](http://toyota.com.au/fleet)

**Frankston Toyota**  
1 Wells Road, Frankston  
T 03 9783 8877  
[frankstontoyota.com.au](http://frankstontoyota.com.au) LMCT 447

TOYOTA SERVICE ADVANTAGE  
CAPPED PRICE SERVICING

TOYOTA ACCESS  
A SMARTER WAY TO BUY

Oh what a feeling!

**WEKA**  
ELEKTROWERKZEUGE

**WEKA HD HIGH FREQUENCY**

**HD 16/18 Core Drills**

- Hand Held or Stand Mount
- Inverted Drilling Capability
- Water Cooled
- IP55 safety rating

**DK 16 Drill**

- Hand Held
- 3 Speed

**PROVEN PERFORMERS**

- 10A & 15A
- Single Phase
- 3 Speed

**TS40 Handsaw**

- 400mm Blade capacity
- Flush Cut option
- 230V or 400V

**DK 23/32 Drill**

**TAMAN**  
Diamond Tool Solutions  
Exclusive Australian Distributor

For your nearest distributor contact:

**SR Drills**

**Features**

- Inverted Drilling capability
- Water Cooled
- IP55 safety rating
- Low maintenance - no brush motor

**NO NEED FOR HYDRAULICS**

**SR 25 - 6 Speed, 1ph-3700w**

**SR38 - 18 Speed, 1ph-3700w**

**SR75 - 9 Speed, 3ph-7500w**

**T: 61 8 9355 3588**  
[sales@taman.com.au](mailto:sales@taman.com.au)  
[www.taman.com.au](http://www.taman.com.au)

**Are you covered for your cuts?**

**Make sure your business is covered if things go wrong**

Tailored risk management cover & advice backed by the massive collective buying power of ASX listed Steadfast

**CALL US FOR RISK MANAGEMENT ADVICE**

PUBLIC LIABILITY INSURANCE | SMALL BUSINESS PACKS | CLAIMS MANAGEMENT | DEDICATED & EXPERIENCED TEAM

**Network Insurance Group**  
Level 3, 509 St Kilda Road, Melbourne  
t: 03 8420 8700  
e: [admin@networksteadfast.com.au](mailto:admin@networksteadfast.com.au)  
w: [www.networksteadfast.com.au](http://www.networksteadfast.com.au)

**network**  
INSURANCE GROUP

**Steadfast**  
STRENGTH WHEN YOU NEED IT

ABN: 20 000 669 778 AFS licence: 231210

**Kalington**

**Diamond Tools**

**Technology Quality Solutions**

Kalington was established in 2002 to develop and supply of professional diamond tools for the concrete sawing and drilling industry.

Kalington always focus on development and improvement of quality. We make every effort to provide a range of high quality diamond blades and core bits. We can also design and make special products for your special project needs.

Kalington - the good choice for high quality diamond tools – an advantage for your business.

Call: **Kalington 03 9329 5933** or email: [james.ling@kalington.com.au](mailto:james.ling@kalington.com.au)



# SAY NAMMOUR: TAKING FLOORING TO THE NEXT LEVEL

BY EMILIA PHILIPPOU

Quality, perfection and flawless floors are all in a day's work for Say Nammour owner, Fadi Nammour. This week we joined him on a residential job to chat and experience his talent in action with Husqvarna surface preparation products.

When you've been in the concrete floor grinding and polishing industry for more than a decade, you've probably picked up a few tricks of the trade or learnt how to use your existing machinery in a way that helps make your job easier. At the end of the day it's how you use your tools and knowledge to produce quality work.

*"Quality, is our number one priority" says Husqvarna Certified Contractor, Fadi Nammour (Say Nammour). "And we need to always be conscious of this when we take on a new job. You are only as good as your last job so you need to ensure that this is top of mind every time."*

Last week, my colleague Steve and I were invited by Fadi to view one of his current projects of grinding and polishing in a residential address in Earlwood. One thing that you quickly learn about concrete polishers using the Husqvarna Hiperfloor system is that they have a keen eye for attention to detail. This is present in aspects of their work as they follow the process of grinding and applying product to the concrete floors in a way so methodical, it really is an art form. As I watched Fadi demonstrate the Hiperfloor process in one of the residence's rooms, I was mesmerised by the way the concrete changed dramatically with each grind and application of Hiperhard solution. The technique used, combined with Fadi's knowledge of which products at each stage, presented a flawless and smooth finished product. The before and after results were vastly different and cemented the idea of why polished floors were becoming so popular in interior settings recently. Polished concrete floors are quickly becoming one of the most stylish additions in home design. Just imagine, smooth and shiny high lustre floors that are touch enough to be present in a warehouse setting and yet professional and stylish enough to be used in office buildings and residential settings. High quality, smooth and detailed is exactly the type of result Fadi Nammour provides to each of his customers. With an eye for detail and a technique he has developed over time, he maintains the art of polishing and detailing that translates to flawless perfection in all his projects. After the demonstration of the Hiperfloor process, I sat down with Fadi to hear more about his work and his experiences with Husqvarna products. Fadi's range of Husqvarna machines regularly used at residential and commercial jobs.



**Sometimes our customers like to let us know which items they have on their Husqvarna wish list. What product would you like to see us develop?**

There is probably a list of products that would be great to have! I think my wish list items would be 5 & 7 inch variable angle grinders and hand tools to match the existing product range. Product development is a key area that we would be expanding on. We would also like to ensure our services help provide a better customer experience.



**Is there one thing we do better than other businesses you work with?**

The service. Knowing that the salesman knows that we are not normal 9-5 contractors, that we are commercial and industrial floor applicators as well. We do break down on the job sometimes or often need products to help us continue a job. Having that peace of mind that they are only a phone call away. Other competitors do not offer the after sales service that Husqvarna does and are more concerned with sales. It's the loyalty and "extra mile" service of Husqvarna reps that keeps us coming back.

**As a Husqvarna Certified Contractor, do you find that jobs are getting referred to you?**

Since becoming certified, I have been getting more enquiries from the website and requests for Hiperfloor installation. This is why I work with a majority of Husqvarna products and I'm a Proud Professional.

**Do you also refer Husqvarna to other contractors?**

Yes. After another contractor interstate trialled Husqvarna products against a competitors, he was pleased with the outcome and also the aftercare service that Steve provided. Steve's support and service stood out and the contractor has since switched to Husqvarna as a result.

**And finally, do you have any projects coming up? What are your secrets to success?**

Yes. At the moment I'm working on a range of polished concrete toppings with a brass logo insert. You will find that Art Deco is back in style now, terrazzo look & brass are now quite popular. Working with different colour pigments and aggregates to achieve the desired effects. I'd definitely like to get some more machinery and expand without compromising quality. Quality is the number one priority for me and I'm always conscious of this. We are as good as our last job, and our passion for the industry helps us constantly push boundaries to achieve perfection.

**Say Nammour Pty Ltd, owned by Fadi Nammour is a company with over a decade of experience in the polished concrete industry, providing immaculate and quality results for every customer.**



Say Nammour



@saynammour







**Over 30 years experience in  
concrete cutting, sawing &  
core drilling projects**

- Experienced Industry Experts
- Specialists in Big Projects
- No breakdown policy, 100% back up equipment ready
- Full service offering concrete cutting, sawing & drilling



**Call 03 9788 5000**  
**[advancedsawing.com.au](http://advancedsawing.com.au)**



**GET THE  
REAL  
DEAL**  
**THE ORIGINAL ARIX FOR nexgen**



MADE BY



PERFECT DIAMOND DISTRIBUTION



**Call 1300 366 662**  
**[www.nexgens.com.au](http://www.nexgens.com.au)**  
**SA/NT • VIC/TAS • WA • QLD • NSW/ACT**



## MR VIN MATHEW

Vin Mathew was born in India on the fourth of October 1950, but spent most of his childhood on the Australian territory of Christmas Island. After fifteen years, Vin moved to Singapore to further his education, after which Vin return to India to attain a Bachelor of Science at University.

In 1972, Vin came to Australia to join the diamond tool industry as a Technical Laboratory Assistant with the firm of Diamond & Boart, after which Vin left to further his studies at the University of Sydney where he graduated with a degree in Chemical Engineering. Upon completing his degree, Vin returned to work for Diamond & Boart in Sydney for a further twelve years.

In 1984, Vin moved to Melbourne to start his own "Australian Diamond Tool" company. Since its inception, Australian Diamond Tools has manufactured the finest specialist tools for the industrial diamond, engineering, construction and stone industries. The tools include sawing, drilling, grinding & fabrication diamond tooling. From Vin's factory in Melbourne, Australian Diamond Tools has been able to respond swiftly to provide short lead times to ensure customer satisfaction. Items such as specialised grinding wheels used for Vitclay pipes have been manufactured in the past and milling wheels in the present for the leading kitchen bench top manufacturers in Australia. These tools have been used on CNC machines to very high production outputs. This wide spread experience has led to the development of a range of specialist tools for use in asphalt, green & cured concrete, and stone. Tools in widths of 50mm and more. Segments for asphalt, concrete, stone, paint and epoxy removal can be made to customer specification with the very best synthetic, natural and diamond powders available.

For any technical support feel free to contact Mr Vin Mathew. We still manufacture in Australia.



ABOVE - Insert caption here.

# yes! We still manufacture in Australia.



Single Blades



Multi-Blades



Wide Blades

## Manufacturers and Suppliers of the Finest Industrial Tools.



### AUSTRALIAN DIAMOND TOOLS PTY. LIMITED

A.B.N. 82 006 294 622

8 Vernon Avenue, Heidelberg West, Victoria, 3081, Australia

P.O. Box 5361, Heidelberg West MDC, Victoria, 3081, Australia

T: 61 (0)3 9459 0733 F: 61 (0)3 9457 5350 E: [ausdiatools@bigpond.com](mailto:ausdiatools@bigpond.com)





Husqvarna®

# CHECK OUT OUR DXR RANGE & TRAINING COURSES

## Enquire about our Robotic Demolition Business & VOC Operator Training Courses

At Husqvarna, training our customers on how best to use our products is always a key focus. We provide Robotic Demolition Business training on how a DXR Robot can add value and productivity to your business, along with an industry leading VOC Operator Training to ensure users are able to experience the full functionality and safety of our product.

To enquire about our Robotic Demolition Business & VOC Training contact your Husqvarna representative today!



[husqvarnacp.com](http://husqvarnacp.com)

Copyright © 2016 Husqvarna AB (publ.) All rights reserved. Husqvarna is a registered trademark of Husqvarna AB (publ.)



Husqvarna®

# CUTTING DEEPER JUST GOT EASIER WITH THE K970 III

## Now with deepest cutting depth on the market!

The new Husqvarna K970 III is our latest improved power cutter with Smart Tension™ semi-automatic belt tensioning. The increased cutting depth of 155mm (16" blade) means that you can cut deeper for longer - featuring a lightweight blade guard to control slurry. With the K970 III, you can work much more efficiently with an easy belt tensioning system and improved depth cutting functionality.

For more information, visit our website or contact your Husqvarna representative today!

## NEW

### HUSQVARNA K970 III

|                    |     |
|--------------------|-----|
| Power (kW)         | 14  |
| Weight (kg)        | 11  |
| Cutting depth (mm) | 155 |
| Smart Tension      | Yes |



[husqvarnacp.com](http://husqvarnacp.com)

Copyright © 2016 Husqvarna AB (publ.) All rights reserved. Husqvarna is a registered trademark of Husqvarna AB (publ.)



## CUT AND CLEAN CONCRETE CUTTING

### EPA CLASSIFICATION – 10 YEARS IN THE MAKING

Cut and Clean Concrete Cutting is a specialist concrete and asphalt cutting company operating within the Melbourne CBD and metropolitan areas. The business was established in 1987 initially as an owner/ operator working with one saw. In 2004 the company was renamed and began trading as Cut and Clean Concrete Cutting.

Due to pressure from within the civil industry, we undertook research and development for a more environmental approach to concrete cutting. This subsequently resulted in the construction of a sustainable and environmentally responsible solution for water conservation and waste management with the concrete cutting process.

Over several years the company has grown with the development of this innovative process and today the company process approximately 100 thousand litres of slurry per month.

We retain the filtered water in storage tanks to be reused on future works and send the solids to Alex Fraser Recycling. The solids/ cake are processed to manufacture crushed rock.

The term “integration” was the key to our success. This enabled our operators to arrive on site and commence work within a very short period of time (5 minute set up). No waiting for vacuum trucks or searching for water connections.

Our trucks arrive at the work site carrying 1000 litres of water, a saw, hand saw and vacuum system thus giving the operators the ability to work all day without returning to the yard.



ABOVE - Releasing recovered slurry to holding tanks



ABOVE - Core Holing Melbourne CBD



ABOVE - Recycling Depot

Currently Cut and Clean Concrete Cutting operate 7 integrated vacuum trucks with another new truck planned for 2017.

Our advancement in slurry recycling would not have been possible without the ongoing commitment of our staff and clients.



ABOVE - Sawing and Vacuuming Melbourne CBD



Cut and Clean have worked with the EPA for over ten years and recently achieved accreditation with the EPA. We have gained a Classification of Concrete Slurry as non-prescribed industrial waste. This Classification enables Cut and Clean to recover and recycle slurry produced from our sawing and coring activities.

Currently Cut and Clean are working towards setting up a recycling centre where we will recycle other contractor's slurry.



## HYDRO CONSTRUCTION PRODUCTS

Hydro Construction Products, having offices Australia wide, have been working closely with LISSMAC to introduce the new LISSMAC Vacuum and Filtration Systems to Support Efficient and Environmentally Friendly Work Practices down under.

For structural reasons, the poured concrete floor in a newly built machine shop, needed to be retroactively fortified by support beams. In preparation for this procedure, preliminary core drilling work was necessary, and the width of the concrete slab had to be shortened by one meter. To keep the work site free of dirt and debris, and in order for the drilling and cutting slurry not to be released into the sewer, the use of an appropriate vacuum and filtration system was mandated. First, holes with a 200 mm diameter, and 25 cm depth, needed to be drilled along the width of the slab. This was necessary to avoid over-cutting and subsequent unwanted cracks in the sections.

LISSMAC DRILL-JET core drilling system was used for this task, consisting of the CDM 33W drill, with a CDR 372 drill stand. Its powerful 3300 W motor supports drilling of holes up to a 350 mm diameter, with three gear speeds for optimal rotational speed at any diameter size. All LISSMAC core drills are equipped with MULTI-TRONIC overload protection, integrated soft-start, and an electronic and mechanical overload clutch, as well as additional thermal overload protection for maximum safety. The K50 INNOVATION vacuum system was used to get rid of the drilling slurry. A water collection ring was kept in place at the drilling site through the suction forces of negative pressure, used in this wet/ dry vacuum system. Water and drilling slurry were suctioned off and drained with the "PROTECTOR 1.0" pre-separator, which uses a wet/dry vac, to suction off waste water, and an integrated pump for draining. The pre-separator protects the vacuum by preventing water from entering. This prevents the filter from getting dirty and losing its suction power. A net located in the pre-separator collects coarse particles, which can then be easily discarded. The waste water was siphoned into a barrel, from where it was then pumped into a LISSMAC waste water filtration system SFA 400. A chamber filter press system separates the drilling, cutting, and grinding sludge from the cutting- and cooling-water. The reusable pressed filter cake can then be discarded or recycled. The cleaned water can safely be discarded, or re-used as coolant for drill bits or saw blades.

After the core drilling work was completed, the concrete slab was cut. The electric floor cutter COMPACTCUT 800 E was used to saw the 40m long area with a 25 cm deep cut. Not only is the COMPACTCUT 800 E, with its 22 kW motor extremely powerful, along with being easy to manoeuvre, which makes it the perfect choice for work inside buildings.

The COMPACTCUT 800 is nicely complemented by the vacuum system VACUUM-WET 100. The waste water suctioning unit removes cutting sludge quickly and easily during the sawing process, right from the joint. A positive side effect is that the saw blade does not have to work through any additional material, therefore the machine works more efficiently and saw blade life span is improved. This mobile vacuum system is versatile in its application, featuring accessories such as a saw blade cover and vacuum hook-up, and it is driven by an electric or gasoline motor. The extracted waste water was, same as in the case of the drilling work, fed into and filtered by the SFA 400.

The requirement to complete all work without leaving behind any drilling and cutting slurry and debris, was completely fulfilled. Environmental protection and avoidance of high waste disposal costs were of major consideration. Ultimately, all work was finished to the complete satisfaction of the customer.

BELOW - Insert caption here.



Further information contact:

**HYDRO CONSTRUCTION PRODUCTS**

Servicing Australia Wide

Ph: 1300GOHYDRO // [www.hydrocp.com.au](http://www.hydrocp.com.au)

# BLASTRAC



WE MANUFACTURE THE BEST SURFACE PREP **SOLUTION(S)**  
NOT JUST THE **BEST** GRINDERS



SHOT BLASTING

SCARIFYING

SCRAPING

GRINDING

DUST COLLECTION

PLEASE CALL US ON **1300 247 111** OR **0407 945 694** FOR A STOCKIST NEAR YOU OR VISIT US AT [WWW.BLASTRAC.COM.AU](http://WWW.BLASTRAC.COM.AU) • [INFO@BLASTRAC.COM.AU](mailto:INFO@BLASTRAC.COM.AU)

PROUD TO BE A MEMBER OF THE CSDAADAA



*Enjoy the Difference*

Extensive range:

- › Diamond tools
- › Grinding
- › Drilling
- › Machinery
- › Floor preparation
- › Sawing

**crozier**  
DIAMOND TOOLS



Ask Our Experts!

**FREECALL 1300 726 511**

[crozierdiamondtools.com](http://crozierdiamondtools.com)



**WACKER  
NEUSON**



**MAKINEX**

**PRODUCT QUALITY & SERVICE BEYOND CUSTOMER EXPECTATIONS**

**SuperCity**  
CONCRETE CUTTING

SERVICING AUSTRALIA

#### SERVICES

- Concrete and Asphalt Sawing and Coring
- Diamond Wire Sawing
- Expansion Sawing
- Wall Sawing
- Hydraulic Sawing
- Grooving & Grinding
- Brokk demolition robot with crushing Systems
- Suspended Slab, Footings, Bank Vaults and Concrete Super Structures
- Bob Cat and Crane Trucks

#### BACKGROUND

- Professional Operators
- Confined Space Entry Accredited
- OH&S and First Aid Accredited
- 24 Hours Service
- Member CSDAA
- E.B.A. Certified C.F.M.E.U.



**Free Call: 1800 SAW CUT**



P 0418 520 311 | F (03) 5248 8010 |

E [supercity@bigpond.com](mailto:supercity@bigpond.com) | W [www.supercity.com.au](http://www.supercity.com.au) |

## Tyrolit Hydrostress Drill Systems

**Dominating  
the  
Industry**



**WEKA**  
DIAMOND CORE DRILLS

Authorised Australian  
Distributor

**1300 TYROLIT (897 654)**

[tyrolit-construction.com.au](http://tyrolit-construction.com.au)

A Company of the SWAROVSKI Group

**TYROLIT**



IMAGE - Robot reduces environmental impact for Supercity

**SuperCity**  
CONCRETE CUTTING

SERVICING AUSTRALIA





## TRAINING REPORT

During the latter half of 2016 we have been very busy completing the compliance checks for the training course – Concrete, Sawing & Drilling. The Recognition of Prior Learning (RPL) component for the training package has been added to scope at Wodonga Tafe.

The next step is for Wodonga Tafe to finalise the interview process for trainers and assessors - who have completed the Certificate IV TAE course. The process for these assessors is exactly the same as it will be for every candidate who applies for RPL.

Having recently completed the RPL process I can tell you there are no short cuts and it is a thorough assessment based on an individual's knowledge and skills. We have included two video presentations on the website to provide an overview of the RPL application process; plus, the information and evidence candidates will require to attain competency. I wish to reiterate that evidence is the single most important part of the RPL process. You may be a great sawing & drilling operator, however you must support the statement with physical evidence.

Looking back at my own history and time in the industry - I thought I had most things covered. It wasn't until I realised that 95% of the jobs I worked on - I was the operator taking the photos and not the operator being captured in the action shot of the task.

Evidence can be in the form of video; photos; go pro; supervisor reports; and/or witnessed by an assessor - one on one. Having all this information in place before you make an application for RPL will save you both time and money.

The initial interview process with your assessor will determine what information is required and whether you need to provide additional evidence to support your application. Again, the more information you can supply in advance will speed up your application process.

Wodonga Tafe are planning to commence taking applications for RPL early in 2017. The past 4 years has been a learning experience and one that we can be proud of as it will define our industry once and for all.

I am currently working on a national alliance with the Tier one construction companies and their OHS Managers. Through the Course in Concrete Sawing & Drilling we have a new bench mark for our industry; based on global standards; providing quality training; and increasing competency; through this fantastic CSDAA initiative with Wodonga Tafe.

**Jason Franken**  
President CSDAA



## CSDAA Quarterly Newsletter

The Cutter Industry Newsletter is emailed out every quarter. It is your chance to connect with the industry, share job stories, relevant industry news, promote people and share the wins!

- ✓ Emailed every February, May, August & November
- ✓ Sponsored Advertisements
- ✓ New Equipment
- ✓ Training Updates
- ✓ Job Stories & more

For all articles & advertisements  
Contact Tionie Bonacci  
☎ 0431 059 115  
✉ [tionie88@gmail.com](mailto:tionie88@gmail.com)





# DIAMONDS

## ADVERTISING

Advertising in Diamonds magazine is the only way to reach the specialty market of sawing and drilling contractors who cut concrete, asphalt or masonry because it is the only magazine in the market specifically targeted to this segment of the sawing and drilling industry.

### HOW DO YOU REACH 5000+ CONCRETE PROFESSIONALS?

Each issue of Diamonds magazine is sent to more than 500 operators, equipment manufacturers and suppliers to the concrete cutting, polishing and imaging industry and more than 4000 specifiers of these services.

### WHO READS THE MAGAZINE?

Diamonds reaches sawing and drilling contractors as well as specifiers of sawing and drilling services, including engineers, architects, general contractors and governmental agencies. Why waste your message on unnecessary circulation? Advertising in Diamonds guarantees a targeted audience of industry professionals.

### CSDAA DIAMONDS WEBSITE

Diamonds has its own website. Advertisers have direct links to their websites placed on our Advertisers page as a complimentary addition to ad placement. A full page-turning copy of the magazine, including ads, is also available for visitors to read on the website. Visitors to the site can now access our advertisers at the touch of a button.



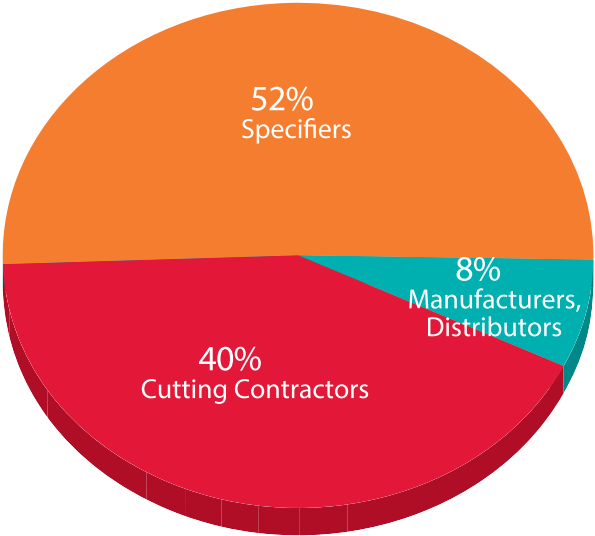
### READERSHIP PER ISSUE

A poll of Diamonds subscribers revealed that 66% pass on their copy of the magazine to at least one other person, with almost 25% stating that the magazine is passed on to four or more people each issue. This translates to an average of four people reading each issue of the magazine for a total readership per year of approximately 60,000.

### CIRCULATION

- 3000+** Per issue - Hard Copy
- 11000+** Members and prospective member companies made up of sawing and drilling contractors, manufacturers, distributors and affiliates via
- 7000+** General contractors, engineers, architects and government officials who specify sawing and drilling

### READERSHIP BY PROFESSION



### CONTACT US FOR YOUR PRESS KIT AND MORE INFORMATION

**Concrete Sawing & Drilling Association - Australia**  
Associations- AI Group 20 Queens Road,  
Melbourne VIC 3004  
**Phone:** (03)9867 0227 Fax: (03)9867 0157  
**Secretariat Email:** info@csgdaa.com.au







## After 40 years of innovation: A compact and powerful demolition robot with built-in intelligence



INTRODUCING:  
**110**

In 1976 we promised to give super powers to some of the hardest working people on earth. We've kept that promise by continuously listening to our customers and providing them with innovative solutions year after year. Now we're introducing our latest addition: The Brokk 110. Built to face anything in its way, the Brokk 110 features a new, robust design, more power and Brokk SmartPower™ – an 'intelligent' new electronic system that ensures a more consistent power supply. At the same time, the Brokk 110 is compact enough to go where no demolition robot has gone before.

Discover a more intelligent future at [www.brokk.com](http://www.brokk.com)



# BROKK®

Brokk Australia Pty Ltd | [www.brokkaustralia.com.au](http://www.brokkaustralia.com.au) | +61 (0)8 8387-7742

## HIGH PERFORMANCE TOOLS

Electric Floor Saws



Exclusively available from:



AUSTRALIA WIDE  
1300 GO HYDRO  
[sales@hydrocp.com.au](mailto:sales@hydrocp.com.au)  
[hydrocp.com.au](http://hydrocp.com.au)

## LISSMAC CONSTRUCTION TECHNOLOGY

Road Saws



Bench Saws



Filtration Units



## CUT & CLEAN

CONCRETE CUTTING • SLURRY RECYCLING

Cut and Clean Concrete Cutting is a specialist provider of concrete and asphalt cutting services. We have been working in the civil industry for over 25 years and provide a 24/7 service.

- Concrete/ Asphalt Flat sawing to depths up to 525 mm.
- Slurry Vacuuming and Recycling
- Hand sawing to depths up to 150 mm.
- Core holes up to any size
- Silence blades (up to 375 mm deep)
- Hydraulic Sawing

PHONE: (03) 9458 1434

MOBILE: 0412 311 963

WEBSITE: [www.cutandclean.com.au](http://www.cutandclean.com.au)

EMAIL: [info@cutandclean.com.au](mailto:info@cutandclean.com.au)





# NEW PRODUCTS

## Hilti Wall Saw: DST 10-CA

Extremely compact, easy to handle, transport and quick to set up thanks to integrated control electronics eliminating the need of an E-Box. Hilti Traction Control for maximum sawing performance with a 20 amp electric supply. Cutting depth is shown in real time in the display on the wireless remote control. High reliability thanks to integrated control electronics and fewer electrical interfaces.

[www.hilti.com.au](http://www.hilti.com.au)



## Hilti Core Drill: DD 350-CA

Powerful 15 amp single phase high-frequency motor with electronic speed control for optimum power delivery over the entire diameter range, easily coring 500mm penetrations. Operation within the optimum power band, for peak performance and longer core bit life, is easy with the aid of the LED power indicators. Iron Boost button for a quick performance boost with increased torque when drilling through rebar. True automatic feed unit that makes drilling a highly efficient and fully automated process. Press the start button and let the machine do all the work.

[www.hilti.com.au](http://www.hilti.com.au)



## Hilti Wire Saw: DS WS 15

Up to 22 kW peak power with minimum water cooling requiring only a 32 amp power supply. Smooth, infinite adjustment of the drive speed from the control console. Pneumatic saw advance tension is constant and easily adjustable at all times for maximum cutting performance.

[www.hilti.com.au](http://www.hilti.com.au)



## NEW from WEKA



The WS75-HF Hi Frequency Wallsaw has finally arrived in Australia.

Robust and light weight, this Wallsaw features a lightweight easy to use design capable of cutting up to 400mm deep. It features an 11Kw Hi frequency water cooled motor, auto constant feed that senses any overloading and WEKA's renowned oil filled gear box, just to mention a few of its advantages.

**TAMAN**  
Diamond Tool Solutions  
[www.taman.com.au](http://www.taman.com.au)

## Husqvarna WSC40 Wall Saw Chain adaptor – precision cutting for wall saws

Husqvarna's popular PRIME™ family introduces an addition to its wall saw products, the WSC 40 wall saw chain attachment easily manages cutting corners and small openings with high precision without overcutting. The wall saw chain attachment is perfect to use separately or as a complement to wall sawing to avoid over cutting at corners.

[www.husqvarnacp.com](http://www.husqvarnacp.com)

## New Husqvarna K970 III – deepest cutting power on the market

Husqvarna introduces a new power cutter to its range for deeper cutting. The K970 III 16" power cutter is the perfect tool for depth cutting (155mm) and is equipped with a lightweight blade guard to control slurry. The K970 III design also includes Smart Tension™ semi-automatic belt tensioning which promotes easy and correct belt tension saving the professional down time allowing them to work more efficiently.

[www.husqvarnacp.com](http://www.husqvarnacp.com)



## NEW CONQUEST 100 – Ground Penetrating Radar

Get the GPR system, specially designed for the sawing and drilling industry.

Call TRAXX on 1300 109 108 for EVERYTHING relating to GPR.

Supported 24.7.365.



After 40 years of innovation:  
We're launching our most intelligent  
invention so far

**BROKK**

Brokk Australia Pty Ltd | [www.brokkaustralia.com.au](http://www.brokkaustralia.com.au) | +61 (0)8 8387-7742

[www.brokkaustralia.com.au](http://www.brokkaustralia.com.au)



## HBE350\*\*\* HAND SAW & BLADE

Cutting depth up to 125mm



- 355mm saw blade with 125mm cutting depth.
- 230V & 2.8kW electric motor.
- Integrated dust extraction connection.
- 2 in stock for trial
- GROSS PRICE \$1430.00

| Part Number | Description       |
|-------------|-------------------|
| 10996674    | HBE350** Hand saw |

- 4.2mm Pre Cutting for Ring saw

| Part Number | Description         |
|-------------|---------------------|
| 34291707    | 4.2mm Pre Cut blade |

## HRE400\*\*\* RING SAW & BLADE

Cutting depth up to 317mm



- 406mm saw blade with 317mm cutting depth.
- 230V 15amp & 3.2kW electric motor.
- Integrated dust extraction connection.
- GROSS PRICE \$6600.00

| Part Number | Description       |
|-------------|-------------------|
| 10996672    | HRE400** Ring saw |

- 406mm Ring saw blade

| Part Number | Description     |
|-------------|-----------------|
| 34258092    | 406mm RSL***-FC |

**BORN TO SET  
NEW STANDARDS.**

INTRODUCTION MOVIE ▶

EXPLORE THE FEATURES ▶

**DURATIQ™**  
Engineered for you

**MK**  
AUSTRALIA®

The choice of serious professionals for cutting, drilling, grinding & polishing.



ISSUE 13 / csdaa.com.au  
MK11/16

**MK**  
AUSTRALIA

Ph: 1300 657 296 • Email: sales@mkdiamond.com.au  
Web: www.mkdiamond.com.au



OUR EXECUTIVE TEAM



THE 2017 CSDAA EXECUTIVE TEAM INCLUDE: **Back row:** Mario Gomizelj; Will Visser; Phil Rowden; Ben Shields; Steve Wylde. **Front row:** Kerrie Auer; Ebony Knight; Jason Franken. **Not present:** Scott Hanley; Catherine Thomson; Kevin Smith.

The CSDAA had executive elections at their recent AGM and would like to introduce the new team for 2017. The team are all volunteers who are supporting the future of our industry.

**Ben Shields** I look after heavy diamond tooling and hire for Hilti Australia and have been in the diamond tool industry for 7 years. Since joining Hilti my personal passion for diamond tooling and concrete demolition has flourished. I joined the CSDAA Executive to further promote the sustainable development of the sector and to attract new young people to our industry and association.

**Catherine Thomson** has been involved in the sawing and drilling industry, in one way or another, for 40 years. Catherine is the owner of QCDS which has been operating since 1995, and are one of the founding members of the CSDAA.

**Ebony Knight** has worked in the Industry for the past 10 years, Managing Cut and Clean for the past six years. Cut and Clean have been members of the CSDAA for 10 years; Ebony has been an Executive member for the past two years and hopes to be involved for many years to come. The CSDAA offers networking opportunities with like-minded concrete cutters throughout the country. With the addition of training the CSDAA is improving the industry within Australia and these improvements will benefit us all in the future.

**Jason Franken** I have been the working director of SCCC since 1993. I have worked across Australia on many infrastructure and demolition projects. CSDAA Involvement: I have been a member of the CSDAA since 1996. I have served as President the past 3 terms and wish to complete one more term. What the CSDAA means to me: I have always looked at the association as a mechanism to deliver industry training and best practice. I am committed to establishing training standards and the promotion of competent operators in the field.

**Kerrie Auer** has been working for Power Concrete Cutting since April 2000 and prior to this worked in a range of industries including Aged Care. Power Concrete Cutting have been members of the CSDAA since it started and have found it to be a great achievement for our industry and a united body of all concrete cutters coming together to have our industry recognized

as close to a trade as possible and not just as labourers. It allows us to liase with concrete cutters in other states to compare the differences of working in different states.

**Kevin Smith** has been the working director of Ripa Concrete Cutting Pty Ltd since he purchased the company in 1984. He has worked on a large number of infrastructure and demolition projects over the past 32 years. Kevin has been a member of the CSDAA since 2005 and is part of the member's executive committee and believes that the CSDAA is a tool to achieve an industry standard across the country, including the areas of training & qualifications, procedures and WHS. It also provides members with opportunities to network with others in the industry and establish new relationships.

**Mario Gomizelj** has been in the concrete cutting industry for 31 years, starting Advanced Sawing & Drilling in 1993, growing it to what it is today. Advanced now proudly specialise in all aspects of concrete sawing and drilling. He has been a member of the CSDAA since its inception, with the aim of helping the industry to become more professional and has been the Treasurer for the past 3 years.

**Phil Rowden** has been in the industry for the past 35 years and with a hand hold in the diamond tools industry he has seen many trends. Phil worked with Dembicon Australia in Adelaide, Brisbane & Melbourne for nearly 10 years before taking up his post with Castle Tools/Tyrolit Australia. Phil has been at Tyrolit Australia for almost 25 years and is currently managing their national sales and marketing team.

**Steve Wylde** is the Managing Director of Online Concrete Cutting Services located in Sydney NSW and has been in the sawing and drilling industry since 1990 during which time he has worked on some of the country's most challenging projects. With a passion to raise the bar within the industry Steve has elected to take on the role of training executive for the CSDAA.

**Will Visser** has been the General Manager of Brokk Australia since 2013 and has been involved with Brokk since 2006. He has worked across Australia, Africa, South America, on many projects in mining, tunnelling and construction. Will has been a member of the CSDAA since 2014 and represents South Australia. Will says the CSDAA platform allows him to interact with concrete cutting professionals and implement improvements that have been developed specifically for this industry.

INDUSTRY DATES

2017

MAY

05 **Executive and General Meeting**  
Sydney, New South Wales

AUGUST

4 **Executive and General Meeting**  
Darwin, Northern Territory

NOVEMBER

17 **Executive and General Meeting**  
Brisbane, Queensland

2018

FEBRUARY

**CSDAA Annual General Meeting**  
Date and time to be advised

**VIC, NSW, QLD, SA, WA, NT, TAS state meetings**  
State meetings are being arranged by the local executive committee representative. They will contact you shortly regarding dates

ADVERTISER'S LIST

To receive additinal information about products advertised in this publication, contact the vendors below:

| PAGE         | ADVERTISER                       | PHONE        | EMAIL/WEB                        |
|--------------|----------------------------------|--------------|----------------------------------|
| 2 & 36 & 39  | BROKK                            | 08 8387 7742 | www.brokkaustralia.com.au        |
| 5 & 37       | Hydro Construction Products      | 1300 46 9376 | www.hydrocp.com.au               |
| 8 & 9 & 30   | Tyrolit                          | 1300 897 654 | www.tyrolit-construction.com.au  |
| 10           | Hilti                            | 131 292      | www.hilti.com.au                 |
| 12 & 13      | Traxx                            | 1300 109 108 | www.traxcp.com.au                |
| 15           | Cutting Edge Diamond Tools       | 1300 870 753 | www.cutting edgediamondtools.com |
| 16           | RSEA Safety                      | 132 100      | www.rsea.com.au                  |
| 16           | Frankston Toyota                 | 03 9783 8877 | www.frankstontoyota.com.au       |
| 16           | Network Insurance Group          | 03 8420 8700 | www.networksteadfast.com.au      |
| 17           | Taman Diamond Tools Solutions    | 08 9355 3588 | www.taman.com.au                 |
| 17           | Kalington Diamond Tools          | 03 9329 5933 | james.ling@kalington.com.au      |
| 20           | Advanced Sawing & Drilling       | 03 9788 5000 | www.advancedsawing.com.au        |
| 21           | Nexgen Construction Supplies     | 1300 366 662 | www.nexgencs.com.au              |
| 23           | Australian Diamond Tools Pty Ltd | 03 9459 0733 | ausdiatools@bigpond.com          |
| 24 & 25 & 48 | Husqvarna                        | 1800 804 105 | www.husvarnacp.com               |
| 29           | Balstrac                         | 1300 247 111 | www.balstrac.com.au              |
| 30           | Crozier Diamond Tools            | 1300 726 511 | www.crozierdiamondtools.com      |
| 31           | Supercity Concrete Cutting       | 1800 520 311 | www.supercity.com.au             |
| 37           | Cut & Clean                      | 03 9458 1434 | www.cutandclean.com.au           |
| 41           | MK Australia                     | 1300 657 296 | www.mkdiamond.com.au             |





CSDAA IS AN ASSOCIATION OF CONTRACTORS, MANUFACTURER AND AFFILIATED MEMBER COMPANIES FROM THE CONCRETE SAWING & DRILLING INDUSTRY. ITS MISSION IS TO PROMOTE PROFESSIONAL SAWING AND DRILLING CONTRACTORS AND SYSTEMS OF WORK.

TO FURTHER DEVELOP OUR ASSOCIATION WE ARE SUPPORTING THE CONCRETE FLOOR PREPARATION, GRINDING AND POLISHING SECTOR.

#### MEMBER BENEFITS:

##### Health and Safety Management Plan Manual

Members can access the Health and Safety Management Plan Manual. The manual complies with current Australian legislation, regulation and codes of practice, and will greatly reduce the time required when completing tenders. The manual provides current information that directly relates to the cutting professional. This innovative product has been developed by industry professionals in concrete cutting, construction and the health, safety and risk management sectors.

##### Industry SWM's

Members can access industry specific SWMS to ensure members are aware of the legal obligations and to meet the needs of their customers sites. SWMS are editable to allow for all information to be included that is relevant to the work site. SWMS are reviewed annually.

##### WHS Handbook

The Work Health and Safety (WHS) Handbook has been developed to provide a practical guide for establishing and maintaining safe work principles within the industry, and to promote safe work practices by managers, supervisors and employees. These safety guidelines when implemented will set best practice for the cutting and drilling industry nationally..

##### Networking at State, National Meetings and the AGM

Meetings are a great opportunity to network with cutting professionals to establish new and consolidate existing relationships.

##### Cooperation and Support from Industry Associations

The CSDAA and its members are members of leading international associations.

Working with the Australian Industry Group the CSDAA has access to employment, OH&S and business experts to support CSDAA members.

##### Affiliations with the following Int Associations:

- Industrial Diamond Association of America
- International Association of Concrete Drilling and Sawing – Europe
- The Drilling & Sawing Association Limited – UK

##### Diamonds Magazine, Newsletter & Website

The Diamonds magazine is the only professional cutters magazine dedicated to concrete cutting with national distribution across Australia, offering Members the opportunity to write articles and/or advertise.

The Cutter Newsletter is distributed quarterly to all members advising on individual state industry activity, and changes that are impacting operators. The newsletter also includes advertising.

The CSDAA web site has loads of useful information, providing access to meeting minutes, forums and technical information.

##### Membership Directory

The CSDAA Membership Directory is available on the web site where you can access like-minded professionals.

##### Member Surveys

The CSDAA conduct regular member surveys to collect valuable information from members to guide and further develop the Association.

##### Further Information

Please visit our web site [www.csdaa.com.au](http://www.csdaa.com.au).

#### FURTHER INFORMATION

Please call a member of the Executive Committee in your state.

##### Queensland:

Catherine Thomson  
(07) 3274 3803

##### New South Wales/Australian Capital Territory:

Scott Hanley  
(02) 9905 8188

##### Victoria/Tasmania/Northern Territory:

Jason Franken  
(03) 5248 8009

##### South Australia/Western Australia:

Will Visser  
(08) 8387 7742

(PLEASE ENSURE  
YOU TICK ONE BOX  
AND SIGN)

- |  |                          |
|--|--------------------------|
| CSDAA New Member Application                                 | <input type="checkbox"/> |
| CSDAA Upgrade Member Application                             | <input type="checkbox"/> |
| CSDAA Renewal & Updating current membership details - Annual | <input type="checkbox"/> |

#### COMPANY INFORMATION

(\*MUST COMPLETE)

##### COMPANY NAME\*

\_\_\_\_\_

##### ABN\*

\_\_\_\_\_

##### REGISTERED ADDRESS\*

\_\_\_\_\_

\_\_\_\_\_

\_\_\_\_\_

##### SUBURB

\_\_\_\_\_

##### STATE

\_\_\_\_\_

##### P/CODE

\_\_\_\_\_

##### POSTAL ADDRESS\*

\_\_\_\_\_

\_\_\_\_\_

\_\_\_\_\_

##### SUBURB

\_\_\_\_\_

##### STATE

\_\_\_\_\_

##### P/CODE

\_\_\_\_\_

#### CSDAA AUTHORISED CONTACT DETAILS

\_\_\_\_\_

##### NAME\*

\_\_\_\_\_

##### POSITION\*

\_\_\_\_\_

##### ACCOUNTS CONTACT\*

\_\_\_\_\_

##### PHONE

\_\_\_\_\_

##### FAX

\_\_\_\_\_

##### MOBILE\*

\_\_\_\_\_

##### EMAIL\*

\_\_\_\_\_

##### WEBSITE\*

\_\_\_\_\_

#### MEMBERSHIP CATEGORY & PAYMENT

PLEASE TICK ☒

##### PAY BY THE MONTH

PLEASE TICK & COMPLETE

ADDITIONAL FUNDING

DOCUMENTS ☒

#### CONTRACTOR:

##### 1. BASIC ANNUAL \$495.00 ☐

- Membership listing on CSDAA web site
- Bi monthly subscription to newsletter
- Free subscription to CSDA magazine
- Free subscription to CSDAA magazine
- Invitation to quarterly general meetings

##### 2. PREMIUM – ANNUAL \$1,500.00 ☐

- Exclusive discount on the CSDAA Accredited Course in Concrete Sawing and Drilling
- Membership listing on CSDAA web site, including logo
- Bi monthly subscription to newsletter
- Free subscription to CSDA magazine
- Free subscription to CSDAA magazine
- Invitation to quarterly general meetings
- Access to the CSDAA electronic manual formatted to your company

##### Information You Must Provide for Premium M'ship

- Maintains \$20,000,000.00 commercial/public liability insurance – Certificate of Currency**
- Maintains work cover insurance to cover all employees – **Certificate of Currency**

**It is essential that ALL information is provided at the time of application or renewal, as processing will not commence until all documentation has been received by the CSDAA.**

##### 3. DISTRIBUTOR/SUPPLIER - \$900 (ANNUAL)

- Banner and link to your web site\*\*
- Free subscription to CSDA magazine
- Free subscription to CSDAA magazine
- Invitation to quarterly general meetings
- Accreditation and online manual access are

Optional for suppliers/distributors, if approved an additional charge applies



ENTRANCE FEE (ONCE OFF FEE)

PLEASE TICK ☒

|   |                                |
|---|--------------------------------|
| Diamond Tool Distributor & Supplier       | \$200 <input type="checkbox"/> |
| Supplier to the Concrete Cutting Industry | \$200 <input type="checkbox"/> |
| Concrete Cutting Contractor               | \$200 <input type="checkbox"/> |
| Flooring/Grinding Contractor              | \$200 <input type="checkbox"/> |

TO BE A MEMBER YOU MUST BE FINANCIAL

I / We hereby apply to be admitted as a Member of the Concrete Sawing & Drilling Association Australia.  
ABN 58 640 253 979

NAME OF AUTHORISED PERSON PLEASE PRINT

SIGNATURE OF AUTHORISED PERSON

DATE

TO APPLY FOR A NEW, UPGRADE OR RENEWAL MEMBERSHIP:

Please send application form and your payment or EFT receipt to:

FAX: 03 9867 0157  
EMAIL: info@csdaa.com.au  
MAIL: CSDAA  
c/o AI Group  
PO Box 7622, Melbourne, VIC 3004

METHODS OF PAYMENT

Annual payments can be paid by EFT, Credit Card or Cheque.

EFT

Concrete Sawing and Drilling Association Australia

National Australia Bank  
BSB 082 141  
ACC 17-250-0407

CREDIT CARD

Please note we do not accept AMEX or Diners CC

NAME ON CARD

AMOUNT TO BE CHARGED

CC NUMBER

EXPIRY DATE

SIGNATURE

CHEQUE -PAYABLE TO CONCRETE SAWING AND DRILLING ASSOCIATION AUSTRALIA INCORPORATED

Please include a cheque for the applicable amount. If your Application is approved by the Executive Committee, the payment will be processed. If your application is declined, the cheque will be returned to you.

ADDITIONAL INFORMATION

- If applying for Premium Membership, please ensure ALL additional information is included so that the renewal can be processed. Processing will only commence once all the information has been provided, including payment.
- \*\* The CSDAA would include an advertising banner and a link to your company web site. Does not include any artwork, and the Member will provide the banner in the required format. Where a banner already appears on the CSDAA web site, the Diamond Membership will provide for the addition of a link to the company web site.
- A cooling off period of 7 days applies. This will not be extended.

CSDAA USE ONLY

Date Received:

Member No:

Accepted? Yes/No & Date

Website login & password sent to member? Yes/No & Date

CSDAA MEMBER LISTING

NEW SOUTH WALES

|   |
|---|
| A-1 Concrete Services Pty Ltd                               |
| Arrow Concrete Cutting Pty Ltd                              |
| B & G Concrete Sawing & Drilling                            |
| Crosscut Concrete Sawing and Drilling                       |
| Decotec Pty Ltd   |
| DGW Concrete Cutting Pty Ltd                                |
| Diacore   |
| Envirocut Pty Ltd   |
| Ezi-Cut and Cure  |
| Forefront Services  |
| Historic Building Solutions (Australasia) Pty Ltd           |
| Mastercut Concrete Australia                                |
| Matt Dalley Concrete Cuttings                               |
| Northwest Concrete Sawing & Drilling                        |
| Nova Cut Concrete Sawing P/L                                |
| Online Concrete Cutting Services Pty Ltd                    |
| Oz Cut Concrete Cutting Services Pty Ltd                    |
| Perfect Concrete Care                                       |
| Ripa Concrete Cutting Pty Ltd                               |
| Roosta Concreting   |
| Stocks & Hogan Core & Saw                                   |
| Sure-Cut  |
| The Chamakos Group Pty Ltd (t/as Arthur's Concrete Cutting) |

NORTHERN TERRITORY

|                                       |
|---------------------------------------|
| Supercity Concrete Cutting Pty NT Ltd |
|---------------------------------------|

QUEENSLAND

|   |
|---|
| Ablecut Concrete Cutting & Coring             |
| ACCU-Cut                                      |
| Allcut Concrete Cutting (QLD) Pty Ltd         |
| Allied Concrete Cutting & Drilling Pty Ltd    |
| Complete Concrete Cutting QLD                 |
| Condrill Services Pty Ltd                     |
| Consaw Services                               |
| Cut and Core QLD                              |
| Cutrite Concrete Sawing and Drilling          |
| Elliott & Fyfe Concrete Cutting Service       |
| Fast Cut QLD Pty Ltd                          |
| Pearson Concrete & Asphalt Sawing & Drilling  |
| Procut Concrete Cutting and Drilling Pty Ltd  |
| QLD Concrete Drilling and Sawing Pty Ltd      |
| Razor Cut Concrete Cutting & Drilling Pty Ltd |
| Southern Cross Concrete Cutting               |
| Southside Concrete Sawing and Drilling        |

|  |
|--|
| Sunshine Coast Concrete and Ashphalt           |
| Townsville Concrete Sawing & Core Drilling P/L |
| Westside Concrete Cutting P/L                  |

SOUTH AUSTRALIA

|  |
|--|
| BK Innovative Concrete Services P/L                |
| Breakaway Concrete Cutting & Drilling (SA) Pty Ltd |
| C & N Concrete Sawing and Drilling Pty Ltd         |
| Supercore  |

TASMANIA

|   |
|---|
| Concrete Sawing and Drilling Tasmania   |
| MPH Contracting                         |
| Schouten Concrete Constructions Pty Ltd |
| Southern Concrete Cutting Pty Ltd       |
| Van Dieman Diamond                      |

VICTORIA

|  |
|--|
| Advanced Sawing & Drilling Pty Ltd               |
| All City Sawing & Drilling                       |
| Auscut   |
| Breakaway Concrete Cutting & Pty Ltd             |
| Concut (VIC) Pty Ltd                             |
| Conquest Cutting & Drilling                      |
| Cut and Clean(L.M. and L.M. Knight Pty Ltd)      |
| Cut and Core VIC                                 |
| Cutting Force                                    |
| Elite Concrete Drilling and Sawing               |
| Kustom Cut Concrete Cutting and Drilling Pty Ltd |
| LJ Diamond Tools Australia                       |
| Melbourne Concrete Cutting Pty ltd               |
| Melbourne Sawing and Drilling P/L                |
| Metro Sawing and Drilling                        |
| Mi-Cut Australia P/L                             |
| Power Concrete Cutting Pty Ltd                   |
| Prestige Saw Pty Ltd                             |
| Smith & Osborne (Magasaw) Pty Ltd                |
| Super City Concrete Cutting Pty Ltd              |
| Vic Sawing and Drilling                          |
| Wylies Concrete Cutting                          |

WESTERN AUSTRALIA

|                             |
|-----------------------------|
| Advance Drilling and Sawing |
| Concrete Cutting Solutions  |
| Concut(WA) Pty Ltd          |

|   |
|---|
| Cut Master  |
| Cut N Break Pty Ltd                               |
| Cutwell Concrete Sawing & Drilling                |
| Diamond Cut Concrete                              |
| Maintenance and Construction Services Australia   |
| Sledgehammer Concrete Cutting Services            |
| South West Concrete Cutting & Drilling Australia. |

SUPPLIERS / DISTRIBUTORS

|  |
|--|
| Blastrac Australia P/L                       |
| Brokk Australia Pty Ltd                      |
| Crozier Diamond Tools                        |
| Cutting Edge Diamond Tools Pty Ltd           |
| GWS Pty Ltd T/as Network Insurance Group     |
| Hilti Australia                              |
| Husqvarna Australia P/L                      |
| Kalington International Int. Development Co. |
| Kennards Concrete Care Pty Ltd               |
| Nexgen Construction Supplies                 |
| Stihl Pty Ltd                                |
| Syntec Diamond Tools Pty Ltd                 |
| Traxx Construction Products                  |
| Tyrolit Pty Ltd                              |





Husqvarna

NOW WITH  
INTUITIVE CUTTING!

COMING  
SOON!

WALLSAW  
CHAINSAW  
ADAPTOR

# ONE PACK TO POWER THEM ALL!

The new Husqvarna PP 490 high frequency electric power pack has intuitive cut which increases productivity by allowing the wall saw to operate at maximum efficiency. It also has a unique advantage: Now you can connect your Husqvarna PRIME™ power cutters, drill motor and large wall or wire saws to the same power pack. It will be ready to operate the soon to be released WSC 40 wall saw chain attachment, enabling you to cut corners and small openings with high precision without overcutting.

## HUSQVARNA PP 490

|                   |                  |
|-------------------|------------------|
| Power output (kW) | 20               |
| Voltage (V)       | 400              |
| Rated current (A) | 32/25/16 reduced |
| Weight (kg)       | 25               |

[husqvarnacp.com](http://husqvarnacp.com)